



RADIUS NETWORK

BRANDING KIT



RADIUS NETWORK

CONNECTING, COLLABORATING & TRAINING

MISSION

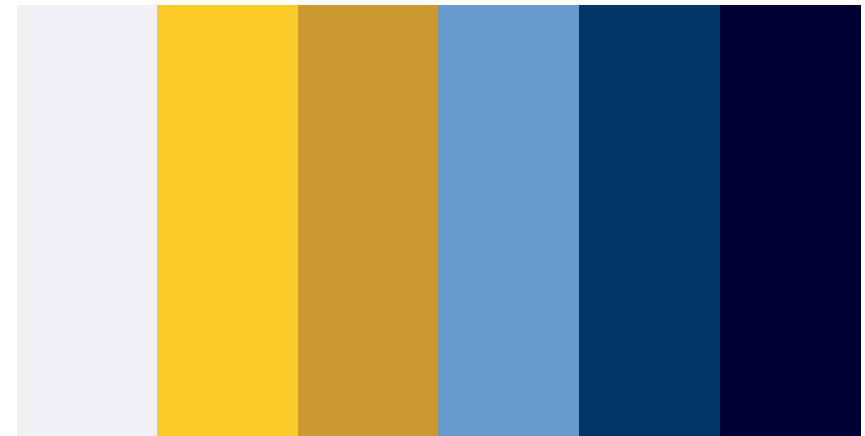
Connect, encourage and train leaders to multiply joyful Jesus families.

VALUES

Centering & Burning, Honor, Attentiveness, Nurturing & Equipping, Transformation/Transfiguration & Multiplication

AESTHETICS

Overall look and feel: Awakening and Nurturing



INCLUDE:

- Event calendar
- Book appointments
- Portfolio
- Testimonials
- Blog/Vlog
- Free Downloads
- Podcast access
- Social Media Links
- Online Courses
- Resource page/links

TOP GOALS:

- Sell Online Courses
- Showcase Ministries
- Publish blog/media
- Market Radius Network
- Build Community
- Mentoring Links
- Collect Donations



COLOR PALETTE

DETAILED

PRIMARY BRAND COLORS



MEDIUM BLUE
#003366



BRIGHT GOLD
#fbc229

SECONDARY BRAND COLORS



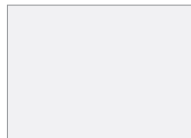
PRIMARY ACCENT COLOR
Light Blue #6699cc



DARK BACKGROUND COLOR
Dark Blue #000033



GOLD ACCENT COLOR
Gold #cc9933



LIGHTER BACKGROUND
Cool White #f1f1f3

GRADIENTS

PRIMARY BRAND GRADIENT

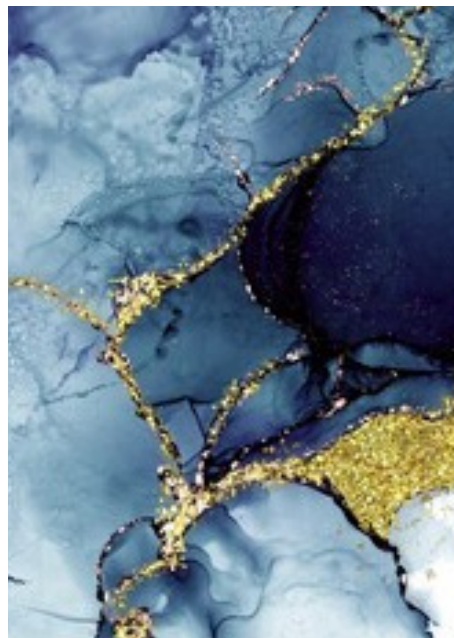
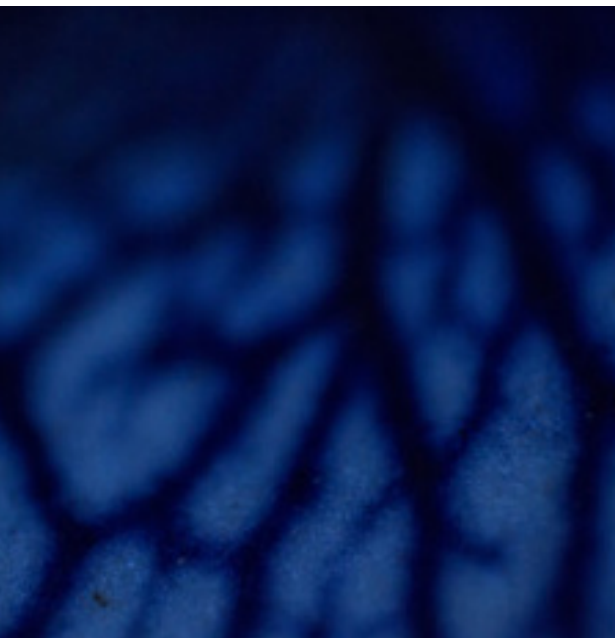
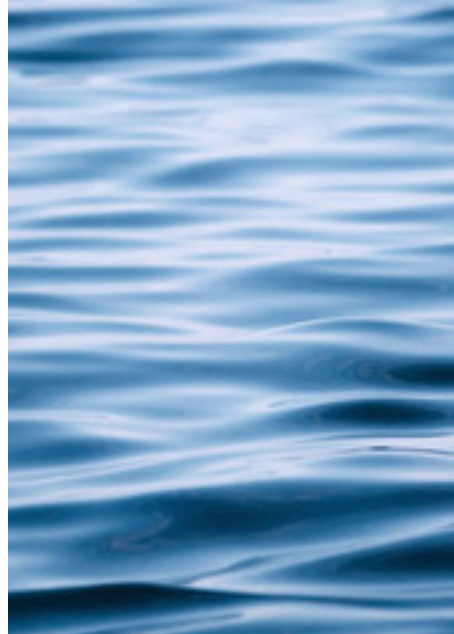


DARK BRAND GRADIENT



ALTERNATE GRADIENT





BLUES:

Peace, Heavenly Realm, Holy Spirit, Revelation, Authority, Faithfulness, Dependable, Wise, Calm, God's Law & Justice

DARK BLUE/SAPPHIRE:

- Sapphire is the color under God's feet as He walked with Moses up on the mountain.
- God's map room has a floor of clear sapphire stone, where he reveals the **Blueprints** of His Kingdom.
- Jesus wears the blue belt as our **Justice of the Peace**; our Divine Judge. He helps us to love and come into alignment with His will. He judges the poor to become rich, the sick to become healed, the lame to walk, the blind to see, the naked to be clothed, the lonely to be loved and His children to become able to walk in His Authority.
- Blue represents **His cleansing & refreshing Waters of Life**. The River of Living Water that flows and pulls us towards the Father's Heart, washes us clean and draws us into **His Deeper Places**.
- The **Flushing Place** where all of our toxins are flushed out of our system and replaced with His peace and order. The Blue veins in our bodies take carbon dioxide to the lungs to be expelled. They escort the "trash" chemicals out of the tissues of the body to be taken to the liver, kidneys or lungs to get rid of the poisons. This river of Peace with God is the antidote for all our poisons. A place of sanctification and healing, washing divine peace into our innermost being. Making peace with God, ourselves, others and creation.
- In ancient times, only royalty could afford costly blue dye or ink. Blue calls for **Kingship to awaken within us**. New levels of authority.
- The Sapphire gem is the second foundation of New Jerusalem.
- The stone is the gemstone of the tribe of Dan, representing the Justice and Judgments of God (pure and holy).

LIGHT BLUE:

Heaven; Holy Spirit; The water that cleanses our feet, and prepares our walk, adorned with the shoes of the **Gospel of Peace**.

"And they saw the God of Israel: and there was under his feet as it were a paved work of a sapphire stone, and as it were the body of heaven in his clearness." – Exodus 24:10

YELLOW/GOLD:

Glory, Kingship, Spirit of Wisdom, Warmth, Clarity, Joy, Fire, Refining, Celebration, Healing, Yielding

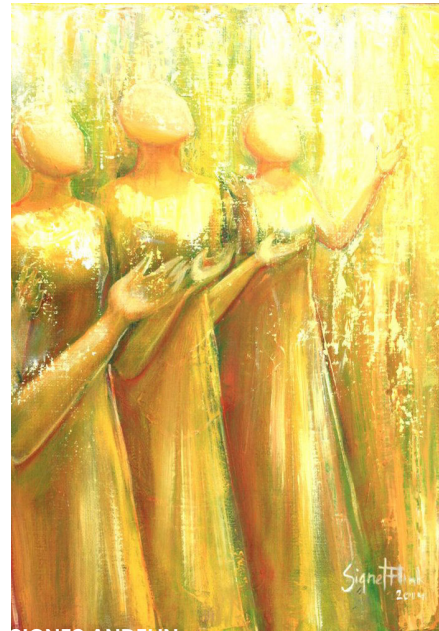
YELLOW:

- Most visible color of the spectrum; the first wavelength of light that the human eye processes.
- Glow of the Shekinah Glory in the Tabernacle and Holy Oil of Grace in the Golden Lampstand. Color of fire representing the **Presence of God** and His **Refining Process**.
- Anointing oil created when we yield our mind, will and emotions to the Living God. In seasons of high pressure, He makes oil into **Joy** that will be set on fire to **light our souls**.
- Distilled anointing from the billowing clouds of prayers that go up from the altar of incense. Incense lit by God's Holy Fire, causing the heart of the Father to become known.
- Grace drops like dew from Heaven into our eyes and we are made able to see in the Spirit the things of God's Kingdom.

GOLD:

- Most precious of metals valued for its beauty and workability.
- **Grace to Yield** to God's Glorious Presence, our inheritance. Gold is the color that everything turns into by being in God's Presence and Glory.
- Represents the riches and booty we get from the enemies our God conquers on our behalf. Gold is the Glory of Heaven.

*"Out of the north he comes in golden splendor;
God comes in awesome majesty." – Job 37:22*



WHITE:

Purity, Righteousness, God's Love, Sanctification, Resurrection

- God's lightning power creating **Resurrection**. White is a symbol for **Awakening**. Holiness, purity, righteousness, sanctification, hosts of heaven, His breath of betrothal and priesthood. His army rides on white horses.
- Color of prayer and hearing the thoughts of God breathed into our ears. **Holy communications**. The electricity of God's thoughts coursing through our spirit. Knowing God like a virgin knows her betrothed. White is the color of the nerves in the body, the place where communications are made between the body and the brain.

"I counsel you to buy from me gold refined in the fire, so you can become rich; and white clothes to wear, so you can cover your shameful nakedness; and salve to put on your eyes, so you can see." – Revelation 3:18

RADIUS NETWORK

TYPOGRAPHY

HEADLINE

CINZEL

ABCDEFGHIJKLM
NOPQRSTUVWXYZ

SUBHEAD

QUATTROCENTO

abcdefghijklm
nopqrstuvwxyz

PARAGRAPH

POPPINS

abcdefghijklmnopqrstuvwxy

Volo que quist, ut ant qui odit vFiciam eatataie net assi ut que eicias et vent aut volut quis volores volor aniti nonsequ aectatquam, sant pra doluptatque desequatio. Ut lacesequi doluptat aut ente nonem aut atem aspis sum as dolo elluptatem sed ute la nullori onsequis nis dolo

TYPEFACE

CINZEL

Aa

Light

Aa

Bold

Aa

Black

H1 HEADING TITLE

Cinzel Light (38 px)

H2 HEADING TITLE

Cinzel Light (30 px)

H3 HEADING TITLE

Cinzel Bold (20 px)

Quattrocento

Aa

Regular

Aa

Bold

H4 Heading Title

Bold (16 px)

H5 Heading Title

Bold (16 px)

H6 Heading Title

Bold (10 px)

PARAGRAPH

POPPINS

Aa

Aa

Aa

Aa

Aa

Aa

Lorem ipsum dolor

20 px

Margin leading

Volo que quist, ut ant qui odit vFiciam eatataie net assi ut que eicias et vent aut volut quis volores volor aniti nonsequ aectatquam, sant pra doluptatque desequatio. Ut lacesequi doluptat aut ente nonem aut atem aspis sum as dolo elluptatem sed ute la nullori onsequis nis dolu. [LEARN MORE](#)

Volo que quist, ut ant qui odit vFiciam eatataie net assi ut que eicias et vent aut volut quis volores volor aniti nonsequ aectatquam, sant pra doluptatque desequatio. Ut lacesequi doluptat aut ente nonem aut atem aspis sum as dolo elluptatem sed ute la nullori onsequis nis dolu. [LEARN MORE](#)

Light Theme Header

Light theme body font. Volo que quist, ut ant qui odit vFiciam eatataiae net assi ut que eicias et vent aut volut quis volores volor aniti nonsequ aectatquam, sant pra doluptatque desequatio. Ut lacesequi doluptat aut ente nonem aut atem aspis sum as dolo elluptatem sed ute la nullori onsequis nis dolu. [LEARN MORE](#)



TEXT COLOR
Medium Blue #003366



LINK/ACCENT COLOR
Gold #cc9933



HOVER LINK COLOR
Bright Gold #fbc29

LIGHT BACKGROUND COLOR
Cool White #f1f1f3

Dark Theme Header

Dark theme body font. Volo que quist, ut ant qui odit vFiciam eatataiae net assi ut que eicias et vent aut volut quis volores volor aniti nonsequ aectatquam, sant pra doluptatque desequatio. Ut lacesequi doluptat aut ente nonem aut atem aspis sum as dolo elluptatem sed ute la nullori onsequis nis dolu. [LEARN MORE](#)



TEXT COLOR
Cool White #f1f1f3



LINK/ACCENT COLOR
Gold #cc9933



HOVER LINK COLOR
Bright Gold #fbc29

DARK BACKGROUND COLOR
Dark Blue #000033

WEBSITE ELEMENTS

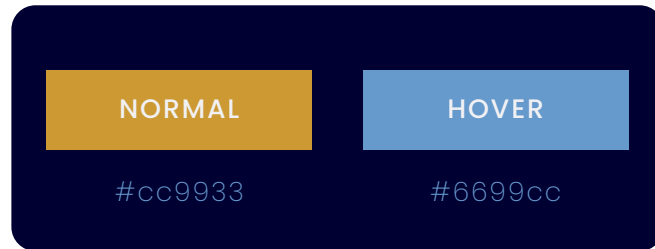
BUTTONS



#6699cc



#003366



#cc9933

#6699cc

FORMS

Textfield

Error message
(#cc3333)

Dropdown

Search

CONNECTING & EQUIPPING

Jesus-led, Vibrant Families of Jesus

Volo que quist, ut ant qui odit vFiciam eatatiae net assi ut que eicias et vent aut volut quis volores volor aniti nonsequ aectatquam, sant pra doluptatque desequatio. Ut lacesequi doluptat aut ente nonem aut atem aspis sum as dolo elluptatem sed ute la nullori onsequis nis dolo

[DISCOVER MORE >](#)

[Ministries](#)[Trainings](#)[Mentoring](#)

JOYFULL FAMILIES OF JESUS

Connecting Jesus led, Vibrant Families of Jesus

Volo que quist, ut ant qui odit vFiciam eatataie net assi ut que eicias et vent aut volut quis volores volor aniti nonsequ aectatquam, sant pra doluptatque desequatio. Ut lacesequi doluptat aut ente nonem aut atem aspis sum as dolo elluptatem sed ute la nullori onsequis nis dolu